

VFFF ANNUAL REPORT 2014



CONTENTS

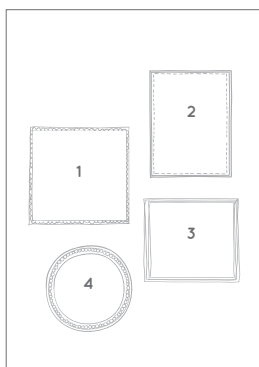
02	Sir Vincent and Lady Nancy Fairfax
04	Chairman's Report
05	Chief Executive Officer's Report
06	VFFF 2014
06	Vision and Mission
07	At a glance
08	Distribution Overview

10	Thematic Grant Making
12	Education
20	Agriculture
24	Christianity
28	Community Wellbeing
34	Strategic Programs
34	Place-Based
37	Children and Prison
39	Social Impact Investment

39	Supporting Australian Philanthropy
40	New Generation Philanthropy
42	Finance and Investment Report
43	Vincent Fairfax Ethics in Leadership Foundation
44	Highlights 2014



Above: The Darling River, Bourke, NSW
(photo credit Kathy Massey)



- Cover 1. Students at Hebersham Public School enjoy a Musica Viva In Schools performance
(photo credit Keith Saunders Photography)
2. The Social Outfit staff members Ava and Oboya at the Ken Done Gallery (photo credit Mark Sherborne)
3. Outback Links volunteer Sam Pursehouse
4. Church service at Church Hill Anglican, Sydney



Nordoff-Robbins Music Therapy - Transforming lives through music (photo credit Paul McMillian)

A FAMILY POT OF GRATITUDE

IN 1962, VINCENT FAIRFAX ESTABLISHED THE FAMILY CHARITABLE TRUST THAT WOULD LATER BECOME THE VINCENT FAIRFAX FAMILY FOUNDATION.

In a note to his family explaining his motivation in 1973, he wrote:

'This action was taken on the basis that my children are well provided for and, hopefully, in their turn will contribute further assets to this Family pot of gratitude for all the benefits we have received since landing in Australia in 1838.'

Vincent Fairfax Family Foundation (VFFF) has distributed in excess of \$115 million to community initiatives since establishment. The torch lit by Sir Vincent and Lady Nancy Fairfax continues in the family today. Their four children have all contributed to the work of VFFF and a third generation, their grandchildren, are increasingly involved, continuing the culture of family philanthropy. VFFF also benefits from the contributions of non-family Directors and a professional staff of five.

SIR VINCENT AND LADY NANCY FAIRFAX

SIR VINCENT FAIRFAX



VINCENT FAIRFAX (1909-1993) began his life in rural Queensland, at Cambooya near Toowoomba and maintained links with the land throughout his life. He held numerous directorships and official positions including Chairman of AMP and a Director of John Fairfax Limited, publishers of The Sydney Morning Herald. He was made a Commander of St Michael and St George (CMG) in 1960 and created a Knight Bachelor in 1971.

Vincent Fairfax was a committed Christian which was reflected in his activities and support of the Anglican Church. He believed strongly in the volunteer spirit, serving in a voluntary capacity in numerous organisations.

He was patient, generous and set people from all walks of life at ease. His integrity and interest in others were strong and as a family man, Vincent Fairfax was in his element. Influenced by four generations of public-spirited men and women before him, Vincent Fairfax touched the hearts and lives of many people.

Sir Vincent's imprint on the VFFF remains strong today. He believed that wealth and position brought responsibility and an obligation to serve the community, as epitomised by the oft-quoted verse in Luke 12:48:

'When a man has been given much, much will be expected of him; and the more a man has had entrusted to him, the more he will be required to repay.'

LADY NANCY FAIRFAX



NANCY FAIRFAX was an advocate for the needs and rights of young children and for the value of early childhood education. She was active in both the Australian Pre-School Association and its successor the Australian Early Childhood Association.

Lady Fairfax was awarded an OBE for her work with Kindergarten-level education and the University of New South Wales bestowed an Honorary Doctorate of Letters in 2004. In 2008, she was made a Companion of the Order of Australia posthumously in the Australia Day Honours List.

Lady Nancy Fairfax was Chairman of the VFFF from 1993 to 2001 and Patron until her death in 2007. This marked the end of an era as she was the last of the Founding Trustees. Looking for ways to help others, Lady Fairfax bequeathed a large part of her estate to the Foundation, enhancing its ability to contribute to the Australian community for many years to come.



Sir Vincent receives knighthood, September 1971,
Buckingham Palace



Rawbelle property, early 1980s



Turning the first soil at Alzheimer's
Australia's Vincent Fairfax Family
Resource Centre, Ryde,
14 February 1994



Family gathering Christmas 1987,
four children and twelve grandchildren

CHAIRMAN'S REPORT

Our 2014 Annual Report detailing VFFF's work in our 52nd year continues to provide a complete report of our grant making and financial metrics. In adopting this fuller form of reporting for the first time last year the Board hoped to encourage collaboration with the ultimate outcome of assisting our target beneficiaries. It is therefore pleasing to reflect on the number of distributions this year that involved working alongside like-minded foundations.

In the 2013/14 financial year we welcomed three new members to the Vincent Fairfax Family Foundation Ltd (VFFFL), bringing total members to 31. In recognition of the ability of young people to make meaningful contributions, the Board removed the policy requiring VFFFL members to have reached the age of 30. When our youngest generation considers they are ready, we will enthusiastically welcome their input as members of VFFFL.

This year VFFF distributed \$6,385,964 (\$7,557,367 in 2012/13) to 84 organisations (86 in 2012/13). I was pleased that two distributions were made under our Children and Prison program, which seeks to identify systemic change to reduce the over-representation of Indigenous children in custody.

In addition to our meetings held in September, November, March and June, the Board and VFFF team visited Condobolin for our Special Policy Meeting in August. Further insights into our place-based work resulted and we enjoyed meeting Shire residents. Alexandra Gartmann, CEO of Foundation for Rural & Regional Renewal, Scott Harris, CEO of Beacon Foundation and Sylvia Admans, CEO of the RE Ross Trust, joined VFFF and I thank them for their ongoing contribution to our work. I am encouraged by the contribution VFFF makes to Condobolin and our Board's acknowledgment of the long-term nature of this work.

The Board welcomed Angus White's return as Director, and appreciates his thoughtful contributions as he assumes the role of Chair of Vincent Fairfax Ethics in Leadership Foundation (VFELF).



The Vincent Fairfax Fellowship was recognised as one of Australia's Top 50 Philanthropic Gifts, an initiative supported by The Myer Family Company, Pro Bono Australia, Philanthropy Australia, The Myer Foundation and Sidney Myer Fund, and the Asia-Pacific Centre for Social Investment and Philanthropy, Swinburne University of Technology.

The founder would be pleased the study of ethical behaviour and development of thought processes is held in high regard.

In accordance with policies, Joy Yeo OAM and Annabel Dulhunty retire from our Board this year after serving two terms totaling eight years each. I thank Joy for her contribution, particularly for her insights into our work in Education. A highlight of Annabel's contribution to VFFF has been the establishment of the Agriculture theme. The Board are pleased Annabel will continue as a part-time employee at VFFF.

Our Audit, Finance and Investment Committee (AFIC) met four times this year. I appreciate the work of James Millar AM as Chair, Nicholas Fairfax and Christopher White as they assist the Board in enhancing the VFFF corpus and maintaining the real value of distributions.

The Small Grants Committee (SGC) continues to provide an encouraging and enjoyable learning environment for the next generation of the family. During the year, the Committee made grants to 20 organisations totaling \$424,141 (2012/13 \$458,698). Committee members gained hands-on experience in grant making, developing their own capabilities and contributing to the work of VFFF in a meaningful and effective way. I am very confident that the future of VFFF is in capable hands.

My very sincere thanks to CEO Jenny Wheatley who continues to make a valuable contribution to the philanthropic landscape and is well respected for her intelligent enthusiasm to collaborate with like-minded foundations. She continues to support and encourage the next generation in an educative way. She is very well supported by an excellent team of Emily Fuller, David Hardie, Rebecca Ninness and Sue Goudie. Their valuable assistance is much appreciated by the Board and family. Very sadly we farewell Rebecca at the end of the year and thank her for her outstanding contribution to VFFF. I am sure she will have benefited from her time with us and her learnings will have been rich and rewarding.

As a result of strategic sessions between the Board and Fairfax family members, in 2014/15 VFFF will undertake deep research in two areas – ethics and education. I look forward to these initiatives and how they may focus the work of VFFF and increase our impact. I am also excited by the opportunities that will be offered to our youngest generation to experience the work of VFFF and how the Foundation aims to continue the legacy of their great-grandparents.

TIM FAIRFAX AC
Chairman

Board of Directors

Tim Fairfax, AC, Chairman

The Honourable Robert Cartwright

Annabel Dulhunty

Angus White

James Millar, AM

Sally White, OAM

Joy Yeo, OAM

CHIEF EXECUTIVE OFFICER'S REPORT



I am very proud of VFFF's achievements in 2013/14 and trust you will be inspired by the stories shared in this report. The pages describing the highlight of each Board and team member are a great place to start if you seek to understand the focus of our work.

If our report encourages you to find out more about the organisations we support, enhances your strategic thinking or starts a conversation around the family dinner table, the Board's aim in producing this report is met. We would be very pleased to hear your stories.

Congratulations to the organisations we worked with during the year for the commitment and difference you have made to those you support. We appreciate your openness and willingness to help us practice more engaged philanthropy.

In 2014/15 VFFF will explore ways to obtain your feedback on our processes. We seek to improve our systems to maximise our effectiveness in gathering information while causing the least drain on an organisation's scarce resources.

As I listen to those that support VFFF's priority beneficiaries, the impact of changes in Federal Government funding priorities has become increasingly apparent. Many times we encounter organisations operating effective and long-established programs that have subsequently had their funding reduced or removed.

The increased pressure on philanthropy to 'fill the gaps' must take into account our limited capacity in comparison to Government.

VFFF seeks to emulate a skilled acupuncturist – inserting our fine needles where energy exists to encourage systematic changes to benefit those VFFF seeks to assist. We look for ways to increase our impact, potentially narrowing our focus while being bold, dreaming big, and accepting risk that Government cannot.

The increased collaboration and transparency in reporting of VFFF and our peer family foundations greatly assists the sectors ability to effectively address the issues facing communities. The opportunity to self-regulate may re-present itself if the proposed abolition of the Australian Charities and Not-for-profits Commission proceeds. Currently much engagement between foundations occurs informally. There is value in considering developing a more formal model in keeping with the Australian philanthropic environment. Of interest in this context is the Reporting Commitment, initiated by a group of the largest U.S. foundations. Accurate and accessible information is critical to effective collaboration, strategic decision making, and a more engaged philanthropic sector.

Emily, David, Rebecca and Sue; we are a team that walks the talk, clearly and consistently focused on VFFF's purpose as a grant maker – collaborative, supportive, and respectfully acting in the best interests of grant seekers.

Rebecca, as planned, you will shortly embark on the next stage of your career. My hope is that your time as VFFF Grants Trainee is as valuable to you as your contribution to VFFF has been.

I am privileged to report to an exceptionally thoughtful and encouraging Chairman and similarly engaged Board of Directors. In particular to our retiring Directors: Joy, your kindness, spirit and grace are a privilege to work alongside; Annabel, the agricultural sector welcomes your contribution and we appreciate how your research has invigorated our grant making within that theme. You have moved deftly between your role as VFFF employee and Director. Your influence on VFFF will extend well beyond the time you have spent at the Boardroom table.

I look forward in 2014/15 to leading the VFFF team as it seeks the right balance between deep and broad and continues the focus on meeting our primary goal of impactful grant making.

JENNY WHEATLEY
Chief Executive Officer

VFFF 2014

VISION

IN HONOURING OUR FOUNDERS' BELIEFS AND INTENTIONS, THE VINCENT FAIRFAX FAMILY FOUNDATION SEEKS OPPORTUNITIES TO BENEFIT AND CARE FOR AUSTRALIANS AND OUR COUNTRY.

MISSION

VFFF aspires to a stronger and brighter future for Australians in NSW and remote areas of the north.

We help disadvantaged young people reach their educational and social potential.

We enhance services and opportunities for rural and regional communities and support the viability of the Australian agricultural sector.

We support a spiritually rich society that values Christian faith in action.



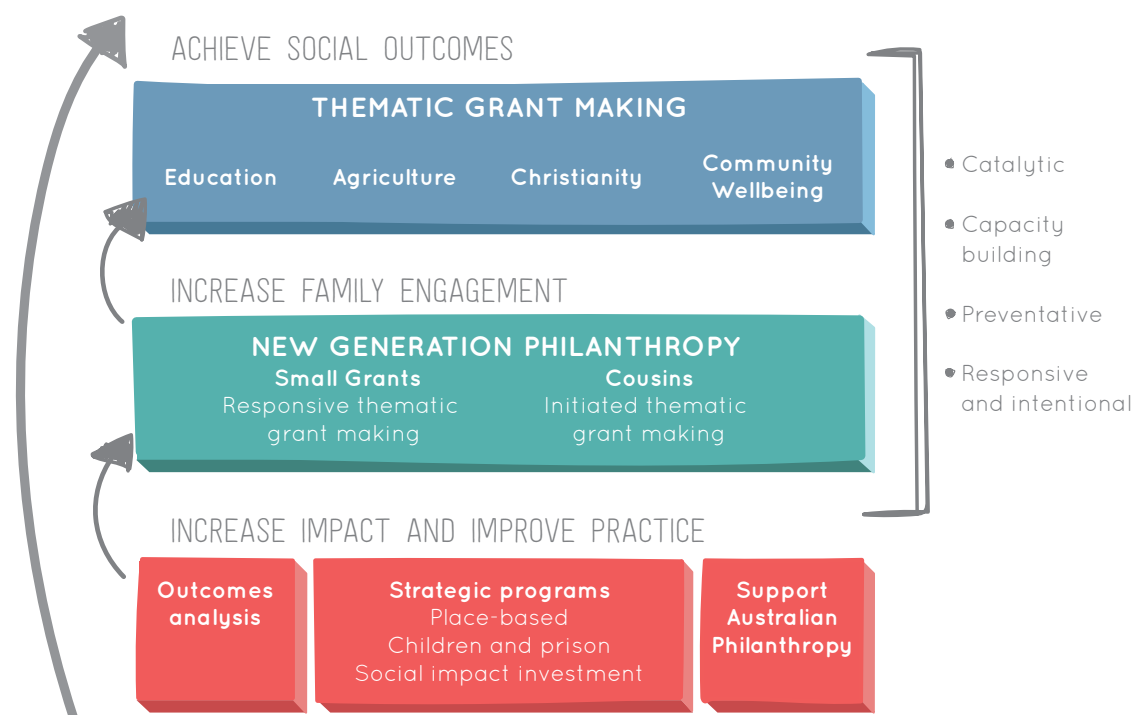
Photo credit Michael Holmes

Mt Tilga, Condobolin, NSW



Fairfax Family members –
Lucy Coulson, Emilia Kefford
and Prue Pateras

AT A GLANCE – OUR WORK IN 2014



ACHIEVE SOCIAL OUTCOMES

THEMATIC GRANT MAKING

The majority of VFFF's resources are distributed across four themes: Education, Agriculture, Christianity and Community Wellbeing. Seeking to maximise the impact of limited funds within these four themes, VFFF supports initiatives that meet specific priority outcomes for particular beneficiaries, as detailed in the coming pages. Within these priorities, VFFF seeks to be catalytic, capacity building and preventative with its funding, time and other resources. While the majority of VFFF's distributions are 'intentional' (specifically sought due to their alignment with the Foundation's aims), VFFF maintains an open application process for 'responsive' grant making.

INCREASE FAMILY ENGAGEMENT

NEW GENERATION PHILANTHROPY

VFFF works with the Vincent Fairfax family to encourage family involvement in the work of the Foundation. A number of the grandchildren (new generation) of Sir Vincent and Nancy Fairfax have been actively involved in various aspects of VFFF's work since 2010. In 2014, they conducted grants assessment and decision-making for VFFF's small grants (under \$25,000) and made a number of initiated distributions through the cousins funding delegation.

INCREASE IMPACT AND IMPROVE PRACTICE

STRATEGIC PROGRAMS

Apart from thematic grant making, VFFF has three strategic programs that aim to increase its impact and improve its philanthropic practice. The first is a Place-based Program, begun in 2011, which supports the Condobolin community bring about the social outcomes it seeks. The second is a Children and Prison Program, begun in earnest in 2014 which aims to contribute to reducing the over-representation of Aboriginal children in the justice system. In 2014, VFFF explored the area of social impact investment and is finalising an impact investment strategy that will guide this third strategic program. VFFF regards these programs as opportunities to invest resources beyond the financial including its networks, time, expertise and voice towards achieving greater outcomes.

OUTCOMES ANALYSIS

VFFF conducts analysis on all grants made to learn and increase its effectiveness as a grant maker. VFFF appreciates recipient organisations sharing their challenges and achievements to assist the Foundation improve its work.

SUPPORT FOR AUSTRALIAN PHILANTHROPY

VFFF hopes to encourage others' involvement in philanthropy and undertakes a number of activities to support the growth of the sector. In 2014, this included financial support to Philanthropy Australia as a Lead Member and a number of grants made for initiatives designed to develop the field of philanthropy. VFFF shares its facilities, tools and expertise with other philanthropic and not-for-profit organisations and benefits from the counsel and support of peers.

DISTRIBUTION OVERVIEW

WHERE DID THE MONEY GO IN 2014?

DISTRIBUTION SNAPSHOT 2013-2014

\$6,385,964
DISTRIBUTION TOTAL

52%
OVER \$50,000

69%
OF FUNDS GIFTED THROUGH
'INTENTIONAL' GRANT MAKING¹

62%
OF FUNDS FOR ACTIVITIES IN
RURAL AND REGIONAL AREAS²

77%
MULTI-YEAR COMMITMENTS

\$70,175
AVERAGE DISTRIBUTION SIZE

FUNDING BY THEME



% OF FUNDING	THEME	NO. DISTRIBUTIONS	TOTAL FUNDING (\$)
37%	EDUCATION	34	2,370,206
26%	COMMUNITY WELLBEING	24	1,683,946
14%	AGRICULTURE	7	919,518
5%	CHRISTIANITY	11	309,028
10%	PLACE-BASED PROGRAM	8	639,666
3%	CHILDREN & PRISON PROGRAM	2	189,600
3%	SUPPORTING AUSTRALIAN PHILANTHROPY	3	209,000
1%	COUSINS	2	65,000
	TOTAL	91	6,385,964

¹ Specifically sought due to their alignment with the Foundation's aims

² Figure between 60% and 64%

GEOGRAPHIC SPREAD

VFFF MAKES DISTRIBUTIONS WITHIN AUSTRALIA, WITH PRIORITY GIVEN TO NSW, REMOTE AREAS OF NORTHERN AUSTRALIA OR, IN SOME CASES, TO NATIONAL LEVEL PROGRAMS



Bourke, NSW

AUSTRALIA

REGION	NO. DISTRIBUTIONS	% OF FUNDING	\$
NEW SOUTH WALES	73	79%	5,024,452
NATIONAL	15	17%	1,099,512
REMOTE NORTHERN AUSTRALIA	3	4%	262,000
TOTAL	91	100%	6,385,964

4/5

OF FUNDS DIRECTED
TO INITIATIVES
IN NSW

NSW

REGION	NO. DISTRIBUTIONS	% OF FUNDING	\$
GREATER SYDNEY	19	24%	1,194,552
MULTIPLE REGIONAL LOCATIONS	9	23%	1,161,306
CENTRAL AND FAR WEST NSW	10	15%	765,441
NORTHERN NSW	12	15%	755,958
METRO SYDNEY	9	10%	481,524
SOUTHERN NSW	8	8%	379,066
MULTIPLE LOCATIONS (METRO AND REGIONAL)	6	6%	286,605
TOTAL	73	101%*	5,024,452

62%

OF FUNDS IN NSW
FOR ACTIVITIES IN
RURAL AND REGIONAL
AREAS

* Total may not add to 100% due to rounding

THEMATIC GRANT MAKING

THE MAJORITY OF VFFF'S RESOURCES ARE DISTRIBUTED ACROSS FOUR THEMES.



Photo credit Caroline Kilby



Photo credit Paul McMillan

EDUCATION

1+1=

PHILANTHROPIC OBJECTIVE

TO PROVIDE OPPORTUNITIES FOR DISADVANTAGED YOUNG PEOPLE (0-25 YEARS) TO REACH THEIR EDUCATIONAL AND SOCIAL POTENTIAL.

TOTAL FUNDING SNAPSHOT

\$2,370,206

BENEFICIARIES

- Indigenous young people
- Young people with disabilities
- Young people in rural and regional areas
- Young people in disadvantaged areas of Greater Sydney

PRIORITY OUTCOMES

- School readiness
- Retention in education or training
- Access and opportunity

DISTRIBUTIONS

34

AGRICULTURE



PHILANTHROPIC OBJECTIVE

TO SUPPORT THE VIABILITY OF THE AUSTRALIAN AGRICULTURAL SECTOR.

TOTAL FUNDING

\$919,518

BENEFICIARIES

- Australian agricultural industries
- Rural communities
- Young people

PRIORITY OUTCOMES

- Increased awareness about the national importance of agriculture
- Agriculture is a career of choice
- Adoption of innovative science and practice on farms

DISTRIBUTIONS

7



Photo credit Helen Coetzee

CHRISTIANITY



PHILANTHROPIC OBJECTIVE

TO ENCOURAGE INTEREST AND PARTICIPATION IN CHRISTIANITY.

TOTAL FUNDING

\$309,028

BENEFICIARIES

- Young people
- Anglican Dioceses
- Early stage Anglican churches

PRIORITY OUTCOMES

- Pastoral care
- Leadership development
- Increased interest in Christianity

DISTRIBUTIONS

11



Photo credit Cassandra Sutton

COMMUNITY WELLBEING



PHILANTHROPIC OBJECTIVE

TO CONTRIBUTE TO A STRONGER AND BRIGHTER FUTURE FOR AUSTRALIANS, PARTICULARLY THOSE EXPERIENCING SIGNIFICANT DISADVANTAGE.

TOTAL FUNDING

\$1,683,946

BENEFICIARIES

- Rural and regional populations
- Refugees and asylum seekers
- Older Australians
- Future Australians

PRIORITY OUTCOMES

- Economic development
- Opportunity and participation
- Innovation

DISTRIBUTIONS

24



EDUCATION

TO PROVIDE OPPORTUNITIES FOR DISADVANTAGED YOUNG PEOPLE (0-25 YEARS) TO REACH THEIR EDUCATIONAL AND SOCIAL POTENTIAL.



FUNDING SNAPSHOT

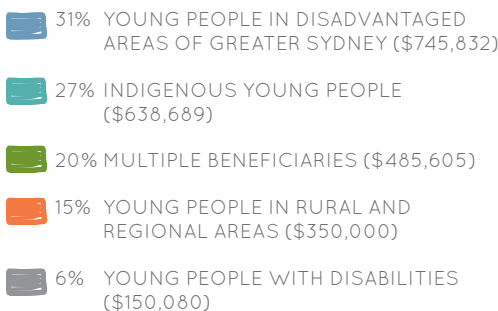


BENEFICIARIES

- Indigenous young people
- Young people with disabilities
- Young people in rural and regional areas
- Young people in disadvantaged areas of Greater Sydney

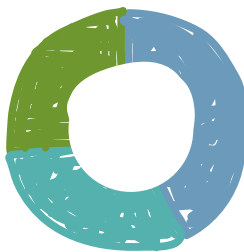


31%
YOUNG PEOPLE IN
DISADVANTAGED
AREAS OF
GREATER SYDNEY

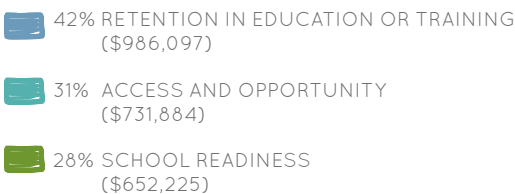


PRIORITY OUTCOMES

- School readiness
- Retention in education or training
- Access and opportunity



42%
RETENTION IN
EDUCATION OR
TRAINING





Above: Students participate in a Musica Viva In Schools music making workshop with ensemble The Chambermaids (photo credit Robert Catto)

Top Left: Gawura students at St Andrew's Cathedral School, Sydney (photo credit Helen Coetzee)

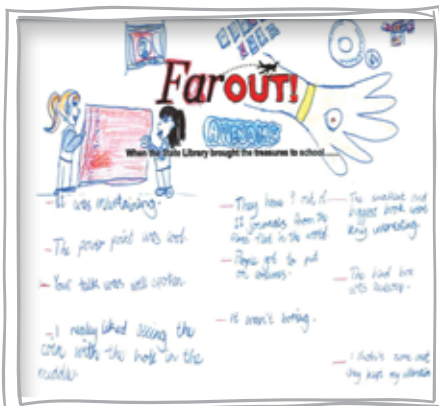


2014 EDUCATION DISTRIBUTIONS

STATE LIBRARY OF NSW

FAR OUT! Treasures to the Bush \$30,000
(total \$90,000)

A touring program providing school students in rural and remote NSW with access to the Library's collection of historical Australian documents and artefacts.



UNIVERSITY OF TECHNOLOGY, SYDNEY, HEALTH PSYCHOLOGY UNIT

Disruptive Behaviour Disorders Project \$100,000
(total \$300,000)

To establish a specialised clinic for 7-14 year olds with disruptive behaviour disorders and their families.

WINSTON CHURCHILL MEMORIAL TRUST

Nancy Fairfax Fellowship \$22,000 (total \$66,000)

To enhance the delivery of early childhood and primary education.

AUSTRALIAN MUSEUM TRUST

Indigenous Youth Cultural Reconnection Program \$108,472

A pilot education program providing positive cultural experiences to Indigenous youth in custody.

AUSTRALIAN THEATRE FOR YOUNG PEOPLE

ATYP Inspire \$40,500

To develop an online streaming platform providing primary students with greater access to drama-based experiences.



BANGARRA DANCE THEATRE

Rekindling \$100,000

A dedicated education program using dance to connect Indigenous youth with their cultures.



Photo credit Tiffany Parker

CASE STUDY:

AUSTRALIAN MUSEUM TRUST

WHAT IS THE AUSTRALIAN MUSEUM?

The Australian Museum is Australia's first public museum, established in 1827. Its key objectives are to disseminate and increase knowledge in the fields of biology, anthropology and geology. It achieves this through an active program of research, exhibitions, education programs and community engagement initiatives.

WHAT WAS THE REQUEST?

In 2012, VFFF supported the Museum's Pacific Youth Cultural Reconnection Program, an innovative concept aimed at addressing the over-representation of Pacific youth in the NSW juvenile justice system. Charting new territory for the Museum, youth worker Thelma Thomas was employed to work alongside Museum staff and design a program harnessing the Museum's rich cultural collection to reconnect Pacific youth in custody with their heritage – a fresh take on a challenging issue. Recognising the value of the program, juvenile justice centre staff requested the Museum consider a specific program for Indigenous young people who represent 50% of youth in custody. In response, the Museum developed a tailored program that sees Indigenous Museum staff, presenters and community organisations delivering educational workshops to build cultural understanding, identity and connection.

WHY DID VFFF SUPPORT THE AUSTRALIAN MUSEUM?

VFFF appreciated the Museum's innovation and willingness to try a different approach, using their vast cultural collection in non-traditional ways to deliver positive educational and social experiences for young people in tough situations.

We valued the unique contribution Thelma, as a social worker, brought to the Museum's ability to work meaningfully with young people. We were encouraged by the success of the Pacific program, which received widespread community and peer recognition, including winning a 2013 Australian Crime and Violence Prevention Award. VFFF also recognised the opportunity to provide catalytic early stage support for the next iteration of a successful program.



\$108,472

OVER TWO YEARS TOWARDS A PILOT EDUCATION PROGRAM PROVIDING POSITIVE CULTURAL EXPERIENCES TO INDIGENOUS YOUNG PEOPLE IN CUSTODY

WHAT DOES THE AUSTRALIAN MUSEUM SAY?

Our work with youth in detention is a radical departure from the traditional museum activities of academic research and exhibitions, so we are literally learning as we go. VFFF support has allowed youth worker Thelma Thomas to join our cultural collections team, and represents the first time any museum in Australia has created a position for a social worker.

Thelma has not only radically improved the way we deliver services to at-risk young people, but taught a whole range of new skills to our curatorial staff, allowing us to turn what was an external into a core part of our ongoing community engagement activities.



CASE STUDY:

YALARI



WHAT IS YALARI?

Founded by Indigenous educator Waverley Stanley and his wife Llew Mullins in 2005, Yalari educates and empowers Indigenous young people from regional, rural and remote communities across Australia to bring about generational change. Yalari offers Indigenous young people the opportunity of a first-class secondary education by providing scholarships to some of Australia's leading boarding schools.

WHAT WAS THE REQUEST?

In 2007, VFFF commissioned research to explore opportunities to back major projects supporting Indigenous Australians to achieve in education. Out of this research, three significant distributions were made. One was for Yalari to provide scholarships for 24 Indigenous students over the course of their secondary schooling at high-performing boarding schools in NSW.

WHY DID VFFF SUPPORT YALARI?

VFFF believed in the vision of Waverley Stanley, which came from his own experience of transformative education.

We were motivated to provide catalytic long-term support for a fledgling, yet high potential education initiative for Indigenous people, led by Indigenous people.

WHAT WERE THE OUTCOMES?

When VFFF supported Yalari in 2007 the organisation was just a year old – having supported three students in 2006. In the subsequent seven years, Yalari has provided scholarships for 260 students, including 82 graduates, and has partnerships with 30 high schools across the country. VFFF support provided 32 students with scholarships to attend NSW boarding schools. Of these, 13 continue their secondary education while nine are undertaking tertiary study in different fields, including teaching, nursing and business. These students have also become role models – encouraging siblings and other family members to aspire to tertiary education. Yalari has extended the program to include post-school and tertiary programs with universities and colleges across Australia.



\$2,389,896

OVER SIX YEARS FOR SCHOLARSHIPS
FOR INDIGENOUS STUDENTS FROM NSW
TO ATTEND BOARDING SCHOOLS

WHAT DOES YALARI SAY?

The support VFFF provided Yalari when we were a start-up not-for-profit company gave us the confidence that we were on the right path and that people could see that what we were doing made sense and was important.

I feel that the credibility the VFFF funding gave Yalari led many other individuals, corporates, and government departments to also support us. We recognise that VFFF were our first major donor and are incredibly grateful for the role that VFFF has played in Yalari's history and success.

EDUCATION (CONTINUED)

MOORAMBILLA VOICES

MAXed Out Company \$15,000

Supporting students from north-west NSW to participate in an intensive choir and performance program.



Photo credit David Smyth

2014 EDUCATION DISTRIBUTIONS (CONTINUED)

CHILD ABUSE PREVENTION SERVICE

Mobile Family Support Program \$67,000

To establish the Program in Darwin, Northern Territory, to enhance access to information resources and social support services for local families.

DAVID WIRRPANDA FOUNDATION

Deadly Sista Girlz \$25,000

A wellbeing and education program for Indigenous girls in Queanbeyan.

GONDWANA CHOIRS

Sydney Children's Choir Choral Outreach \$16,800

A series of choral workshops in south-west Sydney celebrating cultural diversity and developing confidence and leadership skills among students.



MUSCULAR DYSTROPHY

Working Wheels \$25,000

A pilot program providing education, training and employment opportunities for young people with neuromuscular conditions seeking employment.

NGROO EDUCATION

Walking Together \$20,225

An early childhood education program for Aboriginal children in Peak Hill and Trangie, central-west NSW.

SYDNEY THEATRE COMPANY

School Drama™ \$50,000

To transition School Drama™ to a fee-for-service program. This builds on previous support for the pilot and evaluation of this program that uses drama to teach literacy in primary school.

THE DUKE OF EDINBURGH'S AWARD IN AUSTRALIA

Duke of Edinburgh Bronze Award \$25,000

To support young people from Western Sydney participate in the Award, which develops confidence and self-esteem in participants and assists them to explore and develop their potential.

THE GIRLS & BOYS BRIGADE

Capital works \$66,032

To improve facilities at the Surry Hills premises, allowing expansion of current programs.

THE SMITH FAMILY

Girls at the Centre \$20,000

A feasibility study to inform the establishment of a second location for the program, currently successfully engaging young Aboriginal and Torres Strait Islander girls in learning in Alice Springs.

UNITED WAY AUSTRALIA

Redfern Waterloo Health Coalition \$15,000

A community engagement initiative to improve mental health outcomes for Aboriginal young people in the area.

UNIVERSITY OF CANBERRA

Goulburn Strings Program \$25,000

A string instrument education program at Goulburn Public School.



CONTINUING DISTRIBUTIONS

AUSTRALIAN CHILDREN'S MUSIC FOUNDATION

Establishing a music program in five Taree schools
\$20,000 (total \$100,000)

AUSTRALIAN RESEARCH ALLIANCE FOR CHILDREN AND YOUTH

right@home, (Nurse-family partnership)
\$250,000 (total \$1,000,000)

BELL SHAKESPEARE

Regional teacher development program and two remote school residencies \$75,000 (total \$225,000)

CAPE YORK ABORIGINAL AUSTRALIAN ACADEMY

Culture Domain of the Academy curriculum
\$150,000 (total \$450,000)

CENTRE FOR NON-VIOLENCE

Establishing Solving the Jigsaw in NSW
\$56,105 (total \$193,175)

HIGH RESOLVES

Global Citizenship and Leadership Program
\$345,000 (total \$991,417)

JOBS AUSTRALIA – BACKTRACK, ARMIDALE

Operational funding for BackTrack
\$100,000 (total \$300,000)

MUSICA VIVA

In Schools Program in regional NSW
\$35,000 (total \$105,000)

NORDOFF-ROBBINS MUSIC THERAPY

A music therapy clinic in the Hills District, Sydney \$25,080 (total \$75,220)

ST ANDREW'S CATHEDRAL SCHOOL

Gawura student scholarship \$23,362 (total \$92,130)
Gawura student scholarship \$26,630 (total \$79,710)

THE BENEVOLENT SOCIETY

Cluey Kids Program in Western Sydney
\$50,000 (total \$160,000)

THE INFANT'S HOME, ASHFIELD

Operational funding \$243,000 (total \$534,000)

UNIVERSITY OF CANBERRA

The Aspiration Initiative in NSW
\$100,000 (total \$350,000)

WEAVE YOUTH AND FAMILY SERVICES

Kool Kids Club \$50,000 (total \$100,000)

YWCA OF NSW

Community in the Kitchen, Lismore region
\$50,000 (total \$150,000)

SCHOLARSHIPS

UNIVERSITY OF WESTERN SYDNEY

Vincent Fairfax Scholarship awarded to Eden Cox from Tumut to study a Bachelor of Science (Zoology) with a focus on the work of animal sanctuaries



Above: BackTrack's Paws Up dog jump team at the Moocooboola Festival, Hunters Hill
 Top Left: Inika Reeves and Baedon Morrison from Goulburn Public School getting ready for their first day of lessons

RECIPIENTS





AGRICULTURE

TO SUPPORT THE VIABILITY OF THE AUSTRALIAN AGRICULTURAL SECTOR.



FUNDING SNAPSHOT

14%

OF FUNDING

7

DISTRIBUTIONS

\$919,518

TOTAL FUNDING

2

NEW INITIATIVES

86%

MULTI-YEAR COMMITMENTS

\$131,360

AVERAGE SIZE

BENEFICIARIES

- Australian agricultural industries
- Rural communities
- Young people

PRIORITY OUTCOMES

- Increased awareness about the national importance of agriculture
- Agriculture is a career of choice
- Adoption of innovative science and practice on farms



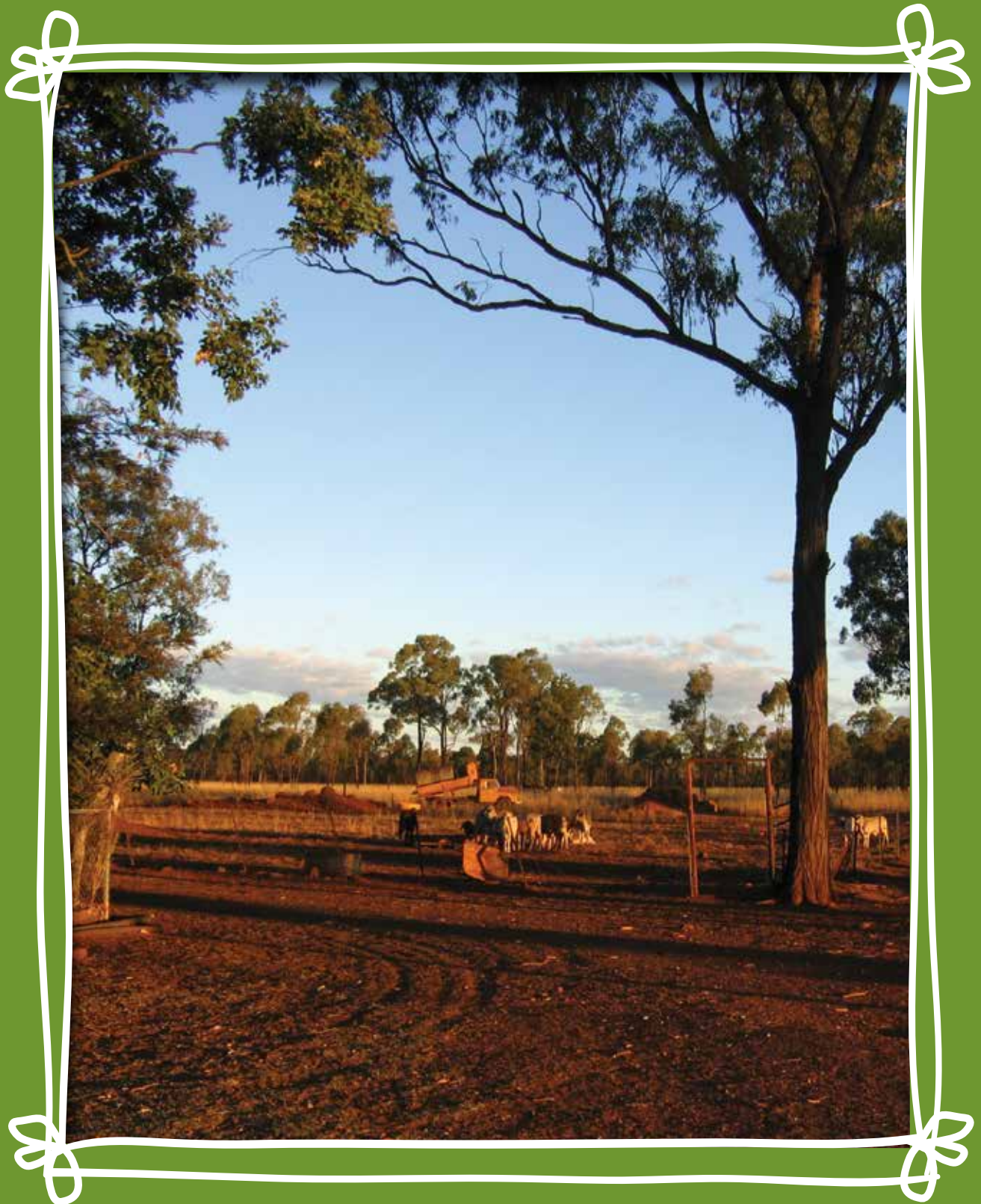
48%
RURAL
COMMUNITIES

48% RURAL COMMUNITIES (\$442,500)

41% OTHER* (\$376,204)

11% AUSTRALIAN AGRICULTURAL INDUSTRIES (\$100,814)

* Refers to distributions approved under our previous Rural and Regional theme



Above: "Golden hour in the yard" taken by Outback Links
volunteers looking across a cattle property as the sun sets near
Charters Towers, North-East Queensland
Top Left: Royal Agricultural Society Foundation
(photo credit Paul McMillian)

CASE STUDY:

LANDCARE NSW

WHAT IS LANDCARE NSW?

Landcare is a community-based approach to managing and restoring Australia's natural environment and improving the sustainability of agricultural activities. Formed in 2007, Landcare NSW is the peak representative and service organisation for more than 2,600 Landcare and producer groups and around 58,000 volunteers in NSW. As the state representative body, Landcare NSW is an advocate for local groups within the broader network of national Landcare delivery.

WHAT WAS THE REQUEST?

Landcare NSW had recently developed a new strategic direction but its capacity to fully implement this was limited by a lack of core operational funding and other resource constraints. Operating in a rapidly changing environment with a complex set of institutional arrangements, Landcare NSW identified that it was at a critical point of transition. Central to this was being able to clearly demonstrate its contribution and value to external stakeholders, including potential funders, as a basis for securing a viable future. In discussions with VFFF, it became clear that building effective internal capacity was central to meeting this challenge.

WHY DID VFFF SUPPORT LANDCARE NSW?

The Landcare movement is an extraordinary example of long-term collective action grounded in committed local volunteers. VFFF gave considerable thought to the challenges facing Landcare NSW and to the opportunities outlined in its new strategic direction.

In this context, we worked with Landcare NSW to determine what would be the most valuable contribution we could make to give the organisation its best chance of longer term success.

A significant capacity building grant developed from this work, to fund the employment of a full-time Executive Officer for an 18 month period and related consultancy support.

WHAT DOES LANDCARE NSW SAY?

For Landcare to grow and flourish into the future, we need a strong representative body to advocate for the movement and provide practical assistance to local Landcare groups.

This grant is enabling Landcare NSW to evolve from a small but effective band of volunteers into a stable, sustainable and professional organisation that will see Landcare thrive as a grassroots movement that continues to transform the landscape and our society through the hard work and collective action of local people.

\$292,500

TOWARDS THE EMPLOYMENT OF A FULL-TIME EXECUTIVE OFFICER TO CONDUCT AN ORGANISATIONAL REVIEW AND DEVELOP A VIABLE ORGANISATIONAL MODEL



2014 AGRICULTURE DISTRIBUTIONS

LANDCARE NSW

**Capacity building and operational support
\$292,500**

Towards the employment of a full-time Executive Officer to conduct an organisational review and develop a viable organisational model.



THE MULLOON INSTITUTE, BRAIDWOOD

Mulloon Watershed Community Project \$150,000

To develop scientific, economic and educational models to support farmers and rural communities implement farm-based innovations that regenerate landscapes.



CASE STUDY:

AUSTRALIAN RURAL LEADERSHIP PROGRAM

WHAT IS THE AUSTRALIAN RURAL LEADERSHIP PROGRAM?

The Australian Rural Leadership Program (ARLP) is an initiative of the Australian Rural Leadership Foundation (ARLF). It is an intensive leadership development experience contextualised around the key issues facing primary industry and rural communities. It seeks to build a leadership network to support rural industries and communities thrive across Australia.

WHY DID VFFF SUPPORT SCHOLARSHIPS FOR THE AUSTRALIAN RURAL LEADERSHIP PROGRAM?

VFFF's support for this program stems from Sir Vincent Fairfax's interests in rural Australia and in leadership. Since 2008, VFFF has provided eleven open scholarships for the ARLP, untied to particular industries. These scholarships gave ARLF the flexibility to select high quality candidates from diverse industries and backgrounds. Kate Riddell was a recipient of a VFFF-sponsored scholarship, graduating in September 2014.

WHO IS KATE RIDDELL?

In the wake of the 2009 Black Saturday fires, Kate Riddell co-founded grassroots community organisation Firefoxes to provide support and resources for communities affected by natural disasters. She also runs a consulting business, teaches part-time in a high school, conducts Mental Health First Aid training and is a devoted mother.

WHAT MOTIVATED YOU TO PARTICIPATE IN THE PROGRAM KATE?

I want my children to grow up in a rural environment that is vibrant, productive and full of opportunities. I was introduced to the ARLP as an emerging leader, keen to increase my ability to contribute to community development, health and education in rural Australia. It seemed the perfect vehicle through which to reflect critically on my leadership, cultivate a deeper curiosity and understand other people, perspectives and connections.



\$300,000

TOWARDS TWO OPEN SCHOLARSHIPS FOR
COURSES 18, 19 AND 20 OF THE AUSTRALIAN
RURAL LEADERSHIP PROGRAM

WHAT HAVE BEEN YOUR KEY LEARNINGS FROM PARTICIPATION IN THE PROGRAM?

This journey has required vulnerability and courage, a willingness to consistently address barriers including gender, race, socio-economic status, access to resources and knowledge – while exposing myself to risk and uncertainty.

This risk has come with limitless rewards, including strong, collaborative relationships, inspiring conversations, huge personal insight and the support to dream big when it comes to the future of rural Australia.

HOW WILL YOU APPLY WHAT YOU'VE LEARNED FOR THE BENEFIT OF RURAL AUSTRALIA?

I have become a more generous leader. I am mentoring emerging leaders, spending more time promoting resilience in rural Australia, and investing in others. The more I give, the more life gives back!

CONTINUING DISTRIBUTIONS

THE NORMAN WETTENHALL FOUNDATION

Small Environmental Grants Scheme
(sustainable agriculture) \$50,000
(total \$150,000)

CHARLES STURT UNIVERSITY – SCHOOL OF DENTISTRY

Accommodation scholarships for Dentistry
students \$162,806 (total \$1,000,000 plus CPI)

MOORAMBILLA VOICES

Employment of 'Moorambilla Mums'
\$30,000 (total \$90,000)

UNIVERSITY OF NEW ENGLAND, ARMIDALE

Equity Scholarships in Teaching, Nursing
and Rural Science \$133,398 (total \$1,152,319)

UNIVERSITY OF WESTERN SYDNEY, HAWKESBURY FOUNDATION

Payment for Ecosystem Services
\$100,814 (total \$294,697)

ONGOING FELLOWSHIP

UNIVERSITY OF WESTERN SYDNEY

Vincent Fairfax Chair in Sustainable Agriculture
and Rural Development: Professor Bill Bellotti

RECIPIENTS





CHRISTIANITY

TO ENCOURAGE INTEREST AND PARTICIPATION
IN CHRISTIANITY.



FUNDING SNAPSHOT

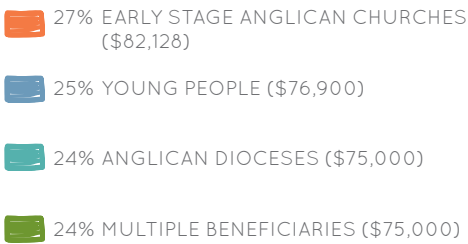


BENEFICIARIES

- Young people
- Anglican Dioceses
- Early stage Anglican churches

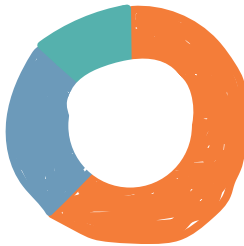


27%
EARLY STAGE
ANGLICAN
CHURCHES

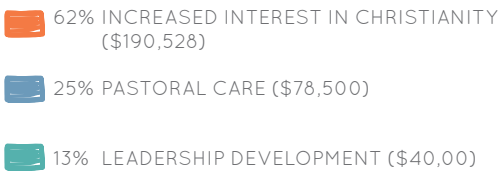


PRIORITY OUTCOMES

- Pastoral care
- Leadership development
- Increased interest in Christianity



62%
INCREASED
INTEREST IN
CHRISTIANITY





Above: Church Hill Anglican, Sydney
Top Left: Generate Ministries School Chaplaincy Program

CASE STUDY:

HARBOUR CHURCH, SHELLHARBOUR

WHAT IS HARBOUR CHURCH?

Harbour Church is a young Anglican Church in the Illawarra region of NSW, delivering their ministry through the facilities of Shellharbour Anglican College.

WHAT WAS THE REQUEST?

Harbour Church approached VFFF seeking support to extend the impact of a small, existing youth ministry by employing a part-time Minister with theological training and youth ministry experience. The new Youth Minister would lead initiatives to increase the number of young people attending church activities as well as training lay leaders for various roles within the youth ministry. By encouraging engagement and regular participation through youth groups, scripture classes and mentoring, Harbour Church aimed to steadily increase the number of young people and families involved in their ministry.

WHY DID VFFF SUPPORT HARBOUR CHURCH?

VFFF is interested in supporting the development of early stage Anglican Churches as a means of encouraging increased participation in Christianity. Harbour Church became an independent Anglican Church in 2011 and it is a congregation of mainly young families. Under the leadership of Pastor Rob Sharp, the church congregation has continued to grow and the employment of a trained Youth Minister was a logical next step to encourage church growth and the further participation of young people.

WHAT DOES HARBOUR CHURCH YOUTH MINISTER JONO BEAZLEY SAY?

It has been a pleasure to join Harbour Church. I am encouraged by what happens each Sunday and am getting to know local young people and families. I am also excited to further the ministries of Harbour Church through scripture in the local primary school and the Crusader's lunchtime group at the Anglican College.



\$46,941

OVER THREE YEARS TOWARDS
EMPLOYMENT OF A YOUTH MINISTER TO
GROW THE HARBOUR YOUTH MINISTRY



2014 CHRISTIANITY DISTRIBUTIONS

HARBOUR CHURCH, SHELLHARBOUR

Youth Minister \$22,128 (total \$46,941)

Employment of a Youth Minister to grow the Harbour Youth Ministry.

MINISTRY TRAINING STRATEGY

MTS Scholarship Program \$40,000 (total \$140,000)

To develop a Diploma Pathways Program to provide accredited theological training for MTS apprentices.

CHURCH HILL ANGLICAN

Hope For Sydney \$35,000 (total \$98,000)

To grow volunteering among young Christians in Greater Sydney.

EVANGELISM AND NEW CHURCHES

Female Pastor at Vine Church \$35,000 (total \$90,000)

Employment of a female Pastor to build the capacity of female leaders in Vine Church, Surry Hills.

ANGLICAN PARISH OF SOUTH SYDNEY

One4Life \$25,000

Providing support groups, pastoral care and a soup kitchen in the Redfern and Waterloo area.

BEVERLY HILLS WITH KINGSGROVE ANGLICAN PARISH

Youth Minister \$20,000

Employment of a Youth Minister to mentor and support young people.

ST LAURENCE'S ANGLICAN CHURCH, BARRABA

Youth Minister \$23,400

Employment of a Youth Minister to support the pastoral and social needs of young people in Barraba, NSW.

WEST RYDE ANGLICAN CHURCH

Migrant and Refugee Support \$20,000

Employment of an International Minister to provide support, emergency relief and pastoral care to migrant and refugee community members.

CASE STUDY:

CHURCH HILL ANGLICAN – HOPE FOR SYDNEY

WHAT IS HOPE FOR SYDNEY?

Inspired by Hope For New York and its practical acts of compassion, Hope For Sydney is an initiative of the Church Hill Anglican Parish. Hope For Sydney aims to increase volunteer service from local churches to charitable organisations serving communities throughout Sydney. It enables young people to put their Christian faith into action by participating in group volunteering activities. It aims to lower the barriers to volunteer service and to provide opportunities for young people to come together and support the practical needs of diverse groups.

WHAT WAS THE REQUEST?

Church Hill Anglican was keen to build on the early success of Hope For Sydney and to expand its volunteer base, the number and type of participating charities and its own internal capacity to manage a range of partner relationships.

WHY DID VFFF SUPPORT THIS WORK?

Church Hill Anglican brings together two historical Sydney churches – St Philip's York St and The Garrison Church in Millers Point. Rector Justin Moffatt has led a period of significant growth in the participation of young people at the newly combined parish. VFFF was impressed with his vision for growing Christian-based service and the involvement of 160 volunteers during the pilot phase of Hope For Sydney. VFFF was pleased to support employment of an Executive Director, the sole employee of Hope For Sydney, to lead its establishment as an independent, sustainable entity.

WHAT DOES HOPE FOR SYDNEY SAY?

Attending to a growing number of young adults who feel compelled to help people in need, Hope For Sydney has been developing services to help lower barriers to charitable service and mobilise volunteers.

Our new training seminars have been developed to equip volunteers to think and act in ways that are inspired by the Gospel; to be radically generous amidst a hardened culture.

Offering training is just one part of an overall strategy to attract and inspire Christians to volunteer in greater numbers.



\$98,000

OVER THREE YEARS TO GROW
VOLUNTEERING AMONG YOUNG CHRISTIANS
IN GREATER SYDNEY

CONTINUING DISTRIBUTIONS

CENTRE FOR INDEPENDENT STUDIES

Religion and Free Society Program
\$35,000 (total \$120,000)

GENERATE MINISTRIES

School Chaplaincy Program
\$40,000 (total \$150,000)

ST PETER'S ANGLICAN CHURCH, SHOALHAVEN HEADS

Children's and Youth Worker
\$13,500 (total \$39,000)

RECIPIENTS



CHURCH
"HILL"
ANGLICAN
SYDNEY



COMMUNITY WELLBEING

TO CONTRIBUTE TO A STRONGER AND BRIGHTER FUTURE FOR AUSTRALIANS, PARTICULARLY THOSE EXPERIENCING SIGNIFICANT DISADVANTAGE.



FUNDING SNAPSHOT

26%

OF FUNDING

24

DISTRIBUTIONS

\$1,683,946

TOTAL FUNDING

12

NEW INITIATIVES

63%

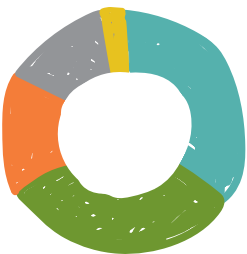
MULTI-YEAR COMMITMENTS

\$70,164

AVERAGE SIZE

BENEFICIARIES

- Rural and regional populations
- Refugees and asylum seekers
- Older Australians
- Future Australians



35%

RURAL AND REGIONAL POPULATIONS

35% RURAL AND REGIONAL POPULATIONS (\$596,016)

32% OLDER AUSTRALIANS (\$534,930)

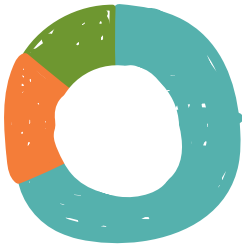
16% MULTIPLE BENEFICIARIES (\$263,000)

15% REFUGEES AND ASYLUM SEEKERS (\$255,000)

2% OTHER* (\$35,000)

PRIORITY OUTCOMES

- Economic development
- Opportunity and participation
- Innovation



67%

OPPORTUNITY AND PARTICIPATION

67% OPPORTUNITY AND PARTICIPATION (\$1,125,688)

18% INNOVATION (\$310,680)

15% ECONOMIC DEVELOPMENT (\$247,578)

* Refers to a distribution supporting capacity building in the not-for-profit sector and a distribution providing skills development and learning for people with intellectual disabilities



Above: Flash Mob performance at Saltwater Freshwater Festival 2014
(photo credit Cassandra Sutton)

Top Left: 'Myriam' by Auburn Girls High School
(artwork provided by Information and Cultural Exchange)



2014 COMMUNITY WELLBEING DISTRIBUTIONS

HASTINGS DISTRICT RESPITE CARE, PORT MACQUARIE

Lighthouse Project \$159,380 (total \$261,214)

To develop and implement a new dementia service model using Montessori principles.

INFORMATION & CULTURAL EXCHANGE

Community Engagement Program \$54,200 (total \$108,400)

To expand the reach of this digital arts program working with vulnerable communities and youth, to new areas in Western Sydney.



Gibrillah Shyne and Kay Dub, Street 2 Studio Showcase

JUSTICE CONNECT

MOSAIC: Migrant Outreach Service \$75,000 (total \$150,000)

Providing pro bono legal assistance to refugees, asylum seekers and recently arrived migrants.

ALZHEIMER'S AUSTRALIA NSW

Dementia outreach program \$100,550

Building the capacity of a range of dementia services in Greater Western NSW to ultimately enhance support for local families impacted by dementia.

COMBINED PENSIONERS & SUPERANNUANTS ASSOCIATION OF NSW

The Rights, Education & Representation for Older People Program \$25,000

Providing elderly tenants with support to address legal tenancy challenges.

EDEN COMMUNITY ACCESS CENTRE

Operational support \$23,716

Employment of an administrator to support the overall operations of the Centre that provides various services, programs and advice for the Eden community.

FAR SOUTH COAST FAMILY SUPPORT SERVICE

Indigenous Support Worker \$25,000

To provide culturally relevant support to Indigenous children and their families in Eden, NSW.

FRONTIER SERVICES

Outback Links Volunteer Program \$60,000

To employ a National Coordinator to redevelop and relaunch the Program which aims to alleviate the disadvantages of isolation experienced by families living in remote areas through the placement of skilled volunteers.



ST FRANCIS SOCIAL SERVICES – HOUSE OF WELCOME

Wellbeing Communities \$20,000

Providing asylum seekers and refugees with practical support and emergency financial assistance.

SCHOOL FOR SOCIAL ENTREPRENEURS

Social Change 101, Coffs Coast \$15,000

Developing the skills, networks and confidence of social entrepreneurs in the Mid-North Coast, NSW.

THE SOCIAL OUTFIT

Opening the Doors \$100,000

To establish a retail and training facility in Newtown, Sydney to provide education and employment opportunities for refugees, asylum seekers and new migrants.

THE WINDGAP FOUNDATION

Making Airwaves \$10,000

A radio program providing skills development and learning for people with intellectual disabilities.

CASE STUDY:

HASTINGS DISTRICT RESPITE CARE

WHAT IS HASTINGS DISTRICT RESPITE CARE?

Hastings District Respite Care (HDRC) has a 26 year history of successfully delivering respite services for people with disabilities and people with dementia in the Port Macquarie area. They operate four centre-based care facilities and in 2014 secured the lease of a new facility that will be the location of their new model for dementia services. Located in the region with the second highest prevalence of dementia in NSW, HDRC has continued to expand its service offerings to support the growing number of people with dementia who live in the community.

WHAT WAS THE REQUEST?

In establishing their new facility, HDRC was interested in pioneering an environment for dementia support using Montessori concepts.

Approaching this from a three year change management perspective, HDRC proposed 'buying-in' specific consulting expertise to create Montessori surroundings and train their staff. Two new permanent roles – the Montessori Champions – would also be created to put the training into practice, mentor the staff team and work with family carers to assist them in their home environment.

WHY DID VFFF SUPPORT THIS PROJECT?

The use of Montessori methods in aged care support is demonstrating promising results in alleviating distress and encouraging older person participation, engagement and wellbeing. By focusing on a person's capabilities and interests, these methods build on what people can still do and the strengths they retain. VFFF was interested in the innovative elements of this change management program and the thoughtful approach to staff capacity building demonstrated in the proposal. We were also reassured by Alzheimer's Australia's interest in Montessori principles and HDRC's focus on integrating the support provided to older people in both their respite and home environments.



\$261,214

OVER THREE YEARS TO DEVELOP AND
IMPLEMENT A NEW DEMENTIA SERVICE
MODEL USING MONTESSORI PRINCIPLES

WHAT DOES HASTINGS DISTRICT RESPITE CARE SAY?

Funding from VFFF will support HDRC to be responsive and use hands-on applications of the Montessori model to build community and individual capacity and resilience. Promoting Dementia Friendly Communities and de-stigmatising dementia is our goal. Our work will focus on carers and our staff and how they can develop a dynamic approach to dementia care at home or in the community at large that enhances the quality of life for people living with dementia.



CASE STUDY:

THE SOCIAL OUTFIT



Photo credit Mark Sherborne



Photo credit Mark Sherborne

\$100,000

TO ESTABLISH A RETAIL AND TRAINING FACILITY IN NEWTOWN, SYDNEY TO PROVIDE EDUCATION AND EMPLOYMENT OPPORTUNITIES FOR REFUGEES, ASYLUM SEEKERS AND NEW MIGRANTS

WHAT IS THE SOCIAL OUTFIT?

The Social Outfit is a social enterprise based in Newtown, Sydney. It uses fashion to provide alternative education, training and employment for people from refugee and new migrant communities in the greater Sydney area. The Social Outfit is based on an award-winning social enterprise, The Social Studio, which has been trading in Melbourne since 2009.

WHAT WAS THE REQUEST?

In 2013, The Social Outfit approached VFFF seeking seed funding to establish a retail store and training facility in Sydney. The store would provide on-site training in retail, fashion design and manufacturing to refugees and newly arrived migrants, with a shop and workspace housed together. It would also offer participants in-store employment as retail assistants and clothing manufacturers.

WHY DID VFFF SUPPORT THE SOCIAL OUTFIT?

People from refugee and asylum seeker backgrounds face significant barriers to participation in employment and education.

Social enterprises like The Social Outfit that offer 'earn-and-learn' opportunities provide a foot in the employment and training door, increasing the chance of participants transitioning into other work and education.

VFFF was encouraged by the success of Melbourne's The Social Studio and could see the potential in replicating this successful model in Sydney.

A motivating factor was that The Social Outfit was at a critical stage of development when philanthropic support would be particularly useful - seed funding from VFFF and co-funding partner Dusseldorp Forum allowed The Social Outfit to 'open its doors' in Newtown in June 2014.

WHAT DOES THE SOCIAL OUTFIT SAY?

Support from VFFF has been instrumental to The Social Outfit, and we're incredibly grateful for this early investment in our social enterprise. Thanks to the partnership with VFFF and Dusseldorp Forum, we secured enough funding to begin our first fully-operational year. When the doors opened in June it was so exciting for us and our community! Now we're all focussed on working hard to provide ongoing skills-training and great fashion for people to wear.

CONTINUING DISTRIBUTIONS

ASYLUM SEEKERS CENTRE OF NSW

Casework support for asylum seekers in Greater Sydney \$60,000 (total \$180,000)

AUSTRALIAN SCHOLARSHIPS FOUNDATION

Operational funding \$25,000 (total \$150,000)

CREATIVITY AUSTRALIA

Seed funding for Sydney Sings community choir \$12,500 (total \$70,000)

FOUNDATION FOR RURAL AND REGIONAL RENEWAL

Caring for Ageing in Rural Australia small grants program \$200,000 (total \$600,000)

FOUNDATION FOR RURAL AND REGIONAL RENEWAL

Culture Arts Tourism & Community Heritage small grants program \$200,000 (total \$600,000)

GRIFFITH BAPTIST CHURCH

Senior Counsellor at Barnabas House Crisis Centre \$94,722 (total \$274,657)

JAWUN

Supporting expansion to the Central Coast, NSW \$75,000 (total \$225,000)

PER CAPITA

Longevity and Positive Ageing research project \$50,000 (total \$100,000)

SALTWATER FRESHWATER ARTS ALLIANCE, COFFS HARBOUR

Corporate Services Manager \$57,578 (total \$163,897)

UMI ARTS

Self-Management Program \$45,000 (total \$133,192)

WALTER AND ELIZA HALL SUPPLEMENTARY TRUST

Small grants for individuals in necessitous circumstances \$120,000 (total \$600,000)

WOMEN'S COMMUNITY SHELTERS

To employ the inaugural CEO \$76,300 (total \$228,900)

SCHOLARSHIPS

ARTHRITIS FOUNDATION AUSTRALIA

AFA-ARA Heald Fellowship Awarded to Dr Sarah Jones from the Southern Clinical School, Monash University to research glucocorticoid-induced leucine zipper as a target for rheumatoid arthritis

ROYAL AUSTRALASIAN COLLEGE OF PHYSICIANS

Vincent Fairfax Family Foundation Research Fellowship. Awarded to Dr James Chong for his project titled Human Cardiac Stem Cells for Heart Regeneration

WINSTON CHURCHILL MEMORIAL TRUST

The Vincent Fairfax Churchill Fellowship to research appropriate interior lighting to enhance the visual and functional abilities of older people. Awarded to Rejane Le Grange who will visit Canada, the UK, Germany, Norway and the Netherlands.

The Vincent Fairfax Churchill Fellowship to explore alternative organisational and funding models for programs supporting youth at risk. Awarded to Bernard Shakeshaft who will visit the USA and Canada.

RECIPIENTS



STRATEGIC PROGRAMS

IN THE LAST THREE YEARS, VFFF HAS SOUGHT TO INCREASE ITS IMPACT AND IMPROVE ITS PHILANTHROPIC PRACTICE THROUGH DEVELOPING A NUMBER OF STRATEGIC INITIATIVES.



PLACE-BASED

'It's a proven fact that community-led initiatives with local support have the greatest impact and achieve longer term results.' Alexandra Gartmann, CEO Foundation for Rural and Regional Renewal.

In 2010, the VFFF Board decided to establish a program that would take a place-based approach. The aim was to support specific communities over a sustained period of time – to meet their goals and address issues important to them. In doing so, VFFF sought to enhance its impact by investing in a range of activities in defined geographies of need, as a complement to its broad-based thematic grant making. Diving deep as opposed to reaching wide.

Since 2011, VFFF has been involved to varying degrees in place-based work in three areas of NSW, constituting a financial commitment of close to \$1.8m. Staff time, expertise and operational funds have also been invested.

In 2014, the focus for this program continued to be on Condobolin in the Lachlan Shire in Central West NSW. This work offers a terrific learning curve for VFFF and it appreciates working with Lachlan Shire communities.

2014 PLACE-BASED DISTRIBUTIONS

MANY RIVERS MICROFINANCE

Microenterprise development in Central West NSW \$175,000 (total \$375,438)

To continue Many Rivers work in Lachlan Shire and expand the area of operation across the Central West of NSW to towns including West Wyalong, Parkes, Forbes, Dubbo, Cowra, Grenfell, Coonabarabran, Gilgandra, Narromine and Wellington. This builds on previous support to establish Many Rivers in Lachlan Shire.

WESTERN PLAINS REGIONAL DEVELOPMENT

Community Connection Officers \$67,500 (total \$178,738) plus \$2,973 (Condo Café incentive funding)

To establish Community Connection Officer roles in Condobolin and Lake Cargelligo to improve coordination among social service providers, ultimately improving outcomes for Lachlan Shire community members requiring social support.

SYDNEY COMMUNITY FOUNDATION

Website and Knowledge Centre \$25,000

To develop a new website for Sydney Community Foundation, including a centre for resources on place-based philanthropy.



FUNDING SNAPSHOT

10%

OF FUNDING

8

DISTRIBUTIONS

3

NEW INITIATIVES

\$79,958

AVERAGE SIZE

\$639,666

TOTAL FUNDING

88%

MULTI-YEAR COMMITMENTS

CASE STUDY:

CONDOBOLIN AND THE LACHLAN SHIRE 2014

Since 2011, VFFF has worked closely with the Condobolin community, building relationships and responding to community-identified needs and opportunities.

This place-based program is hands-on community development work involving multiple stakeholders across multiple activities. VFFF takes on a mix of convening, facilitating and funding roles.

Over two days in August 2013, the VFFF Board met at the Wiradjuri Study Centre in Condobolin for its annual strategy meeting. During the visit, Directors had the opportunity to meet many Lachlan locals and hear about the area first hand. A highlight was the Condo Café in which 50 community members, representatives of the Beacon Foundation, the Foundation for Rural and Regional Renewal and VFFF came together to discuss *'participation and involvement for a thriving local community.'*

This workshop identified four big issues facing Condobolin: *Education and young people, Employment and industry, Community spirit and stability and Service and infrastructure.*

A plethora of brilliant ideas was generated, with a number already progressed. A regular education section in the Condobolin Argus has increased awareness of student achievements and school happenings. Community Connection Officer positions were established across Condobolin and Lake Cargelligo, based on an identified need to enhance coordination between social service providers. This continues the investment in people that characterises the majority of VFFF's grants in the region.

The four big issues will also form the structure for the Lachlan Region Community Grants Program in 2014/15, increasing the resources available for community-identified priorities.



CONTINUING DISTRIBUTIONS

BEACON FOUNDATION

Establishing the Beacon Program in Condobolin High School \$48,000 (total \$179,000)

FOUNDATION FOR RURAL AND REGIONAL RENEWAL

Lachlan Region Community Grants Program \$117,500 (total \$352,500)

PENRITH PERFORMING AND VISUAL ARTS

On the Road, a culture and arts program across the Lachlan Shire \$40,000 (total \$120,000)

WESTERN PLAINS REGIONAL DEVELOPMENT

Operational funding \$83,807 (total \$254,600)

WIRADJURI CONDOBOLIN CORPORATION

Teaching and Outreach Co-ordinator, Wiradjuri Study Centre \$77,559 (total \$237,745)

RECIPIENTS



CASE STUDY:

COMMUNITY CONNECTORS – LINKING THE LACHLAN



Shane Phillips and Tawny Gleeson

HOW DID THIS INITIATIVE COME ABOUT?

Lachlan Shire Interagency Groups sought a means to improve the social services system in the Shire. Their key observation was that there are many service providers working hard but not as effectively as they could, due to a lack of co-ordination and transparency.

Representatives of the Interagency Groups approached VFFF with three key messages:

- 1. there is not a lack of services available and/or funded to provide services to our communities*
- 2. people don't care which agency provides a service but they need to know how to access it when needed*
- 3. local communities don't understand visiting services and an ongoing coordination point is required*

They sought our support to seed fund a Community Connection Officer role to take practical steps to improve service coordination across the Shire.

WHY DID VFFF SUPPORT ITS ESTABLISHMENT?

VFFF's observations concurred with the above assessment and it saw a dedicated connector as a sensible response that would, if effective, hold value for local service providers and funding bodies. The barriers to service provision in Lachlan Shire are common to many rural and regional communities and include a prevalence of outreach services (fly in fly out), distance to large centres, limited public transport and lack of community trust in outreach services.

VFFF was motivated by the proposal as a community-generated response to a community-identified need with potential to be a model for other regional communities. It saw catalytic potential in piloting an effective new approach to addressing regional service provision issues.

WHAT ARE THE AIMS?

To improve communication and collaboration between providers, increase service accessibility and uptake across the Shire – ultimately improving outcomes for community members requiring social support. If these outcomes are achieved and there is greater transparency and coordination among services across Lachlan, the community will be in a stronger position to influence government funding allocations to be more responsive to community needs and service gaps.

MEET THE COMMUNITY CONNECTORS

SHANE PHILLIPS

Coming home after many years, this was my chance to give something back. I was born and bred in Lake, my family are here, we have businesses in the community – this was a tangible way for me to use my skills and experience and allows me to work with the “whole” of community.

I love it. This is my home, my community, my people – let's do what we can to make a change that's owned by the community.

Our position will shine a spotlight on the current and future human services network in the Lachlan Shire. I am hoping this role becomes the key to an active community voice – not just consultation – generating considerable impetus for change.

NICKY LOMBARD

I am new to Condobolin, originally hailing from Sydney and making the ‘bush change’ in recent months. I am thrilled to be in a role that lets me engross myself in the community. This initiative will give the community the chance to function as best it can and ensure that everyone has the opportunity to access the services they need to lead a fulfilling life.

The aim is that we will be the catalysts in connecting people with services, connecting services with each other and connecting the community needs with service opportunities.

We have started to forge working relationships with all service providers and have investigated and launched communication tools to aid collaboration between providers and service promotion to the public.

TAWNY GLEESON

Lake Cargelligo is my birthplace and I feel a strong connection to the community and the land here, despite living away for the past 30 years. It was easy to come home to raise my family, as it is the kind of childhood I would wish for everyone – free and safe, outdoorsy, and supported by extended family and community. The Community Connections initiative is an opportunity to use my experience to meet the needs of the Lachlan Shire.

I can imagine a time when the communities we live and work in have an active stake in their service provision, where services are readily accessible, transparent, well-coordinated and community focussed.

If the community's real needs are met, and peoples lives are measurably improved, this new Community Connection initiative will have been successful.



CHILDREN AND PRISON

THE PROFILE OF CHILDREN INVOLVED WITH THE JUSTICE SYSTEM IN NSW IS ONE OF MULTIPLE AND OFTEN ENTRENCHED INTERGENERATIONAL DISADVANTAGE, MOTIVATING VFFF TO SEEK A WAY TO MAKE A USEFUL CONTRIBUTION TO SUPPORT THEM.



Source: 2009 Young People in Custody Health Survey, NSW Department of Human Services, Juvenile Justice



These statistics paint a tragic picture, but one that is clear in terms of the risk factors and the suggestion that most children who end up in prison were on the trajectory long before they were old enough to commit a crime.

In June 2013, after extensive consultation to learn about the circumstances and issues leading children into contact with prisons, VFFF Directors agreed to establish a Children and Prison Program (CAPP) with an aim of reducing the over-representation of Aboriginal children in the juvenile justice system in NSW.

The CAPP is a hands-on philanthropic program conceived as a three-part framework: **FUND** (grant making), **ACT** (discussion, consultation, build relationships and raise awareness), **SEEK** (learning and knowledge, opportunities and collaborators).

FUNDING SNAPSHOT

3%
OF FUNDING

2
DISTRIBUTIONS

\$189,600
TOTAL FUNDING

\$94,800
AVERAGE SIZE

2014 CHILDREN AND PRISON DISTRIBUTIONS

FUND

During 2014, VFFF made its first two distributions to this program, both in regional NSW.

ABORIGINAL LEGAL SERVICE (NSW/ACT) LTD

Justice Reinvestment \$73,600 (total \$147,200)

To support the development of a social and economic case for Justice Reinvestment in Bourke. The term justice reinvestment refers to diversion of a portion of resources spent on incarceration to community-determined prevention activities.

The Bourke trial is an Australian-first innovation aiming to break the intergenerational cycle of offending and incarceration, and influence a change in government policy towards achieving better outcomes for communities with high involvement with the justice system.

APOSTOLIC CHURCH AUSTRALIA LIMITED - ETERNITY AID

Operational funding \$116,000 (total \$216,000)

Towards Eternity Aid's work with young offenders, their families and communities in Bourke and expansion to two other NSW regional areas with high rates of incarceration among young people.



ACT - DISCUSSION, CONSULTATION, BUILD RELATIONSHIPS AND RAISE AWARENESS

Continuing to seek opportunities for philanthropy to encourage change in the trajectory that leads children to courts and prisons, we determined to undertake community-level consultation to inform future funding decisions. In April 2014, we convened an expert Reference Group to inform this process. It was suggested we focus discussions with one community, such as Dubbo, that has both high rates of youth recidivism as well as thriving young Aboriginal people, to identify ways to increase the number of those on positive pathways and reduce the numbers in and out of custody. Discussions have recently begun and we would like to express our thanks to those involved from the Dubbo community, for their openness and interest in working with us.

SEEK - LEARNING AND KNOWLEDGE, OPPORTUNITIES AND COLLABORATORS

VFFF continues to learn from those at the coalface of youth justice and in communities as well as from other philanthropists involved in this work in Australia and overseas. In February, together with the Dusseldorp Forum Board, the VFFF Board were motivated to hear from Emily Tow Jackson about the Tow Foundation's Juvenile Justice Initiative, an award-winning philanthropic program instrumental in encouraging reform in the youth justice system in Connecticut, USA and improving outcomes for many young people there. This example demonstrates that changing the trajectory is possible and that philanthropy has a role to play.

Our thanks to the Children and Prison Reference Group members: Peta McGillvray, Brendan Thomas, John Kirby, Edwina Crawford and Professor Tony Vinson and to the NSW Bureau of Crime Statistics and Research and Juvenile Justice NSW (Department of Justice) for their support. VFFF is delighted to work in close partnership with the Dusseldorp Forum on this initiative.

RECIPIENTS



SOCIAL IMPACT INVESTMENT

VFFF AIMS TO IDENTIFY OPPORTUNITIES TO MAKE IMPACT INVESTMENTS THAT ACHIEVE COMMERCIAL RETURNS AND FURTHER SOCIAL OUTCOMES FOR OUR BENEFICIARIES

VFFF continued to explore ways that strategic investments may enhance the outcomes of work within our mission. Thank you to Louise Walsh and Caroline Vu of Philanthropy Australia, Kylie Charleton and Andrew Tyndall, who have each ensured VFFF had opportunities to engage with those most knowledgeable in the areas of impact investment, nationally and globally. We are encouraged to ask – “What is the best use of the VFFF dollar for mission and financial return, taken together?”

We were inspired by meetings with Charly and Lisa Kleissner of the KL Felicitous Foundation, who have 100% of their corpus in mission-aligned investments. Engaging VFFF's investment team at Cambooya with our grant making team, shortly after year-end the Board approved an investment policy that aims to invest 5% of corpus in broadly mission-aligned investments by 30 June 2017. It is envisaged that investments will be made across all asset classes, through intermediaries rather than directly, realising investment objectives consistent with those set before impact investments were introduced into the mix.

While ambitious, VFFF considered it important to articulate this goal and will encourage our investment advisors to develop the expertise and appetite to achieve this.

We will also seek ways to measure and report on outcomes from these investments with integrity and reliability. Encouragingly, the Board are not letting timeworn habits prevent VFFF from embracing this process, recognising that the next generation of family members are increasingly interested in this style of philanthropy.

While we navigate the terminology and fiduciary complexities of this style of investment, VFFF is reminded by our thoughtful Trustee Emeritus Geoffrey White OAM, that everything that looks new and shiny has most likely been tried before. Early on, significant family foundations in the U.S., including Rockefeller, Carnegie and Ford, made mission-aligned loans and equity investments in addition to grants. VFFF is stirred by the urgent, outsized and wicked problems our beneficiaries face to explore ways beyond traditional grant making that may provide additional solutions to these problems.



SUPPORTING AUSTRALIAN PHILANTHROPY

The following distributions supporting the Australian philanthropic sector were initiated in 2014

AUSTRALIAN COUNCIL FOR EDUCATIONAL RESEARCH Leading Learning in Education and Philanthropy (LLEAP) \$25,000

Towards the final phase of LLEAP, a national research project investigating the impact of philanthropy in education.

FOUNDATION FOR RURAL AND REGIONAL RENEWAL Innovation for Community Impact \$134,000

A matched funding program with NSW Department of Family and Community Services to support innovative work addressing key social issues in the Mid North Coast, Hunter Valley and Central Coast of NSW.

CONTINUING DISTRIBUTIONS

PHILANTHROPY AUSTRALIA

Leading Membership \$50,000 (total \$150,000)

RECIPIENTS



NEW GENERATION PHILANTHROPY

VFFF WORKS WITH THE VINCENT FAIRFAX
FAMILY TO ENCOURAGE FAMILY INVOLVEMENT
IN THE WORK OF THE FOUNDATION.



\$100,000

ANNUALLY DELEGATED
FOR VFFF COUSINS
GRANT MAKING

Left to right: Rob Dulhunty, Joseph O'Brien, Christopher White, Annabel Dulhunty, Camilla White, Prue Pateras, Nick Fairfax, Lucy Coulson, Fiona Poschelk, Dean Kefford, Sarah O'Brien, James Pateras, Emilia Kefford

Members of the new generation (cousins) have been actively involved in various aspects of VFFF's work since 2010. There are a number of ways family members participate in VFFF work, including two formal mechanisms – 'responsive' grant making through the Small Grants Committee which conducts assessment and makes decisions on all applications up to \$25,000 and cousins 'initiated' grant making.

The Board delegates \$100,000 per annum to support cousins grant making. All new generation members and their spouses are able to put forward projects for funding consideration by their cousins.

Small Grants Committee 2014

Angus White
Annabel Dulhunty
Emilia Kefford
Emma White
Justin White
Lucy Coulson
Prue Pateras

NEW DISTRIBUTIONS

LA TROBE UNIVERSITY

Australian Futures Project \$32,000

Towards the implementation phase of the project, including analysis into Australia's decision making system and consultation with leaders, experts and the public

OUTWARD BOUND AUSTRALIA

Walkabout Cultural Youth Program \$33,000

A pilot project to improve the health, wellbeing and educational attainment of at-risk Indigenous youth from remote Queensland communities

RECIPIENTS



CASE STUDY:

DOCUMENTARY AUSTRALIA FOUNDATION

WHAT IS DOCUMENTARY AUSTRALIA FOUNDATION AND *PAUL KELLY: STORIES OF ME*?

Documentary Australia Foundation (DAF) facilitates the use of philanthropic donations to fund a wide range of documentaries that tell community-focused stories, shining a spotlight on important social issues. DAF provides expertise, information, guidance and resources to help the documentary and philanthropic sectors work together to achieve their mutual goals.

Paul Kelly: Stories of Me is a documentary feature about the iconic Australian musician, storyteller and poet, Paul Kelly.

WHY DID THE COUSINS SUPPORT *PAUL KELLY: STORIES OF ME*?

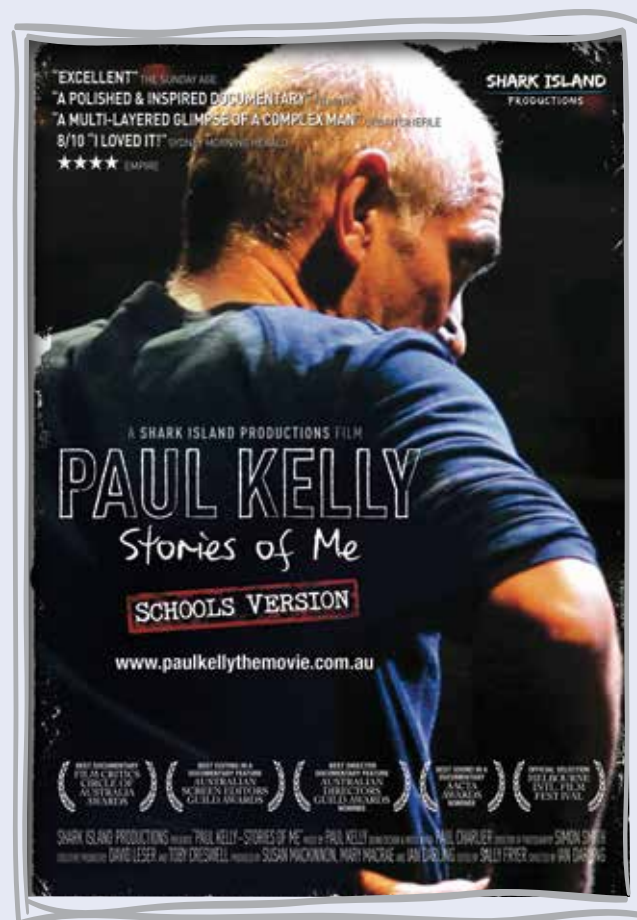
This documentary provided a unique vehicle to educate and involve Australian students in both the performing arts – highlighting the value of music, poetry and storytelling – and in the range of social and cultural issues embedded in Kelly's lyrics.

The cousins saw this documentary as an excellent opportunity to develop engaging curriculum materials relevant to Australian students and to support the concept of creative learning.

WHAT WERE THE OUTCOMES?

Paul Kelly: Stories of Me was in the 2012 Australian Box Office Top 10 and won a number of awards including Best Documentary, Film Critics Circle Australia Awards. It was also in the Official Selection of the Melbourne International Film Festival.

Paul Kelly – Portrait of an Artist, a National Curriculum resource (English and Music) for Years 10-12 was launched in 2013 at the National Portrait Gallery (NPG). The resource offers a portrait of an artist in an Australian context and examines the processes of artistic composition and critique, the status of celebrity and our response. The NPG also co-produced a resource for Visual Arts. Since launch, 314 schools have registered to use the resources, with an estimated reach of over 20,000 students and a Facebook following of over 7,000. It is linked to teaching portal Scootle and has had over 1,000 referrals from the Education Services Australia website. In 2015, it will feature on the ABC Innovation platform Splash (the ABC screening of *Paul Kelly: Stories of Me* had 500,000 viewers), and a series of Professional Development resources will be developed with Reconciliation Australia.



\$25,000

TO SUPPORT THE DEVELOPMENT OF THE
DOCUMENTARY *PAUL KELLY: STORIES OF
ME* AND ACCOMPANYING EDUCATION AND
OUTREACH PROGRAM

WHAT DOES DOCUMENTARY AUSTRALIA FOUNDATION SAY?

Paul Kelly: Stories of Me is one of the most collaborative philanthropic initiatives we have partnered on. It opened up many creative conversations and opportunities around the power of documentary and story-telling.

WHAT DO TEACHERS SAY?

'If you have not viewed the film I recommend you check out these teaching resources while previewing it these holidays. It won't seem like work spending some time with Paul Kelly and I think we should celebrate his work as widely as possible. Australians need more quality documentaries that explore our cultural landscape that are also engaging for teenagers. Shark Island Productions and Documentary Australia Foundation should be commended for their philanthropic ventures especially in supporting schools with teaching resources.' (Darcy Moore, Deputy Principal Dapto High School, on his blog)

FINANCE AND INVESTMENT REPORT

THE INVESTMENT OF THE CORPUS OF VFFF AND VFELF IN A DIVERSIFIED PORTFOLIO IS OVERSEEN BY THE AUDIT, FINANCE AND INVESTMENT COMMITTEE (AFIC) WITH THE ASSISTANCE OF PROFESSIONAL ADVISORS.

	VFFF		VFELF	
	2013/14	2012/13	2013/14	2012/13
Portfolio market value	\$179.9m	\$159.3m	\$6.5m	\$6.3m
Distributions	\$6.4m	\$7.5m	\$0.35m	\$0.35m
Cumulative distributions	\$115.5m	\$109m	\$4.52m	\$4.17m
Distributable income 2014/15	\$6.4m	\$6.5m	\$0.54m	\$0.36m
Future commitments*	\$3.2m	\$5.6m	\$2.0m	\$0.35m

Directors have set a distribution target of \$7 million for VFFF in the 2015 financial year.

* Future commitments are conditional on available funds in the distribution account.

COMBINED OPERATING EXPENSES	2014	2013
Operating expenses	\$820,091	\$834,353
Operating expenses as a % of distributions made	12.2%	10.5%
Operating expenses as a % of net assets	0.4%	0.5%

During the financial year the AFIC met on four occasions in relation to the financial governance of VFFF and VFELF. The Boards acknowledge the significant contributions of Cambooya Pty Limited, JANA Investment Advisors, particularly Mr John Coombe, and KPMG (honorary auditor) to the financial governance of VFFF and VFELF.

Audit, Finance and Investment Committee Members

James Millar AM, Chairman

Christopher White

Nicholas Fairfax

VINCENT FAIRFAX ETHICS IN LEADERSHIP FOUNDATION



VFELF Board of Directors

Angus White, Chairman

The Honourable Robert Cartwright

Deborah King-Rowley

Michael Murray

Peter Wilson AM

In 2013/14 the Vincent Fairfax Ethics in Leadership Foundation (VFELF) entered into a new agreement with the Centre for Ethical Leadership (CEL) at Ormond College to the end of the 2018/19 financial year.

The five year agreement followed the positive findings of the 2013 Vincent Fairfax Fellowship Audit which reviewed the work of the Fellowship in developing ethical leadership in Australia. The agreement is subject to an annual review of progress against objectives determined with a view to continuing the development and success of the Vincent Fairfax Fellowship, the flagship program of the CEL.

During the year the Fellowship and CEL moved to Ormond College from Melbourne Business School. CEL has developed its branding, marketing and social media, including that of the Vincent Fairfax Fellowship.

Since 1994 more than 250 Fellows have completed the Vincent Fairfax Fellowship.

June saw the graduation of 17 Fellows from cohort 19 and the commencement of cohort 20, all threshold, C-Suite or High Potential Executives from a range of organisations and industries. The program continues to strive for higher representation from the commercial sector.

In June an exceptional Vincent Fairfax Oration was thoughtfully given by Air Marshal Mark Binskin AO, Vice Chief of the Defence Force, just prior to him taking on the Chief role. Air Chief Marshal Binskin related to Sir Vincent's value of 'little leaders' and the Fellowship's aims, and spoke of the importance of trusting frameworks to deliver effective operations to command over 81,000 uniformed members.

He spoke of the need for military personnel at all levels to operate ethically and effectively, inspiring colleagues along the way.

The Vincent Fairfax Speaker Series continued in Melbourne and Sydney. Fred Chaney AO delivered an excellent thought-provoking and passionate talk on Indigenous policies in Melbourne and Sydney, also aired on Radio National. Attendance levels in Sydney were low for a talk of such substance. The Board is working with CEL to improve the reach of the Speaker Series.

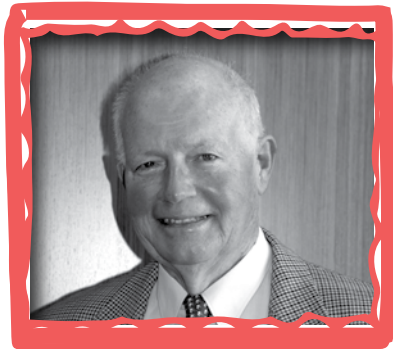
The CEL team led by Professor Robert Wood and Jennifer Jones continue to develop the program and its profile. This is strengthened by the wider offerings of CEL including the introduction of the two day ethical leadership program which complements the Vincent Fairfax Fellowship.

I'd like to extend a warm thanks to Robert Cartwright for his contribution to VFELF as my predecessor Chairman, serving in this capacity from 2007 to 2013 and now continuing as a Director. Further, I thank my fellow Directors for their support and input towards the impact of VFELF. On behalf of the Board, I'd like to thank Jenny Wheatley and the team at Cambooya for their efficient work, often behind the scenes, in ensuring VFELF operates smoothly.

A handwritten signature in blue ink, which appears to read 'Angus White'. The signature is stylized and fluid.

ANGUS WHITE
Chairman VFELF

2014 HIGHLIGHTS



**GEOFFREY WHITE OAM,
TRUSTEE EMERITUS**

The trip to Condobolin for VFFF's Special Policy Meeting was a positive experience with many learnings. It is my hope the Wiradjuri Study Centre continues to be an important part of the community, and I am encouraged by the potential of the Beacon Foundation to affect positive change for students of Condobolin High School.



**ANGUS WHITE, DIRECTOR,
VFELF CHAIRMAN**

It was a big honour for VFFF and family to have the Vincent Fairfax Fellowship™ named as one of Australia's Top 50 Philanthropic Gifts, a fitting acknowledgment for a program on ethical leadership that continues to influence leaders since 1994. The visit to Condobolin for the Special Policy Meeting was excellent as it was great to meet some of the people the Foundation has been involved with in the community.



ANNABEL DULHUNTY, DIRECTOR

The distribution to The Social Outfit in Newtown to provide education and employment opportunities for refugees and asylum seekers. This is a great example of a wonderful social enterprise using creativity, fashion and education to upskill and empower migrants and interact with the broader community in a positive way.



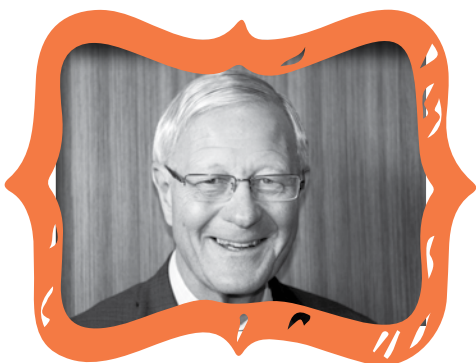
JOY YEO OAM, DIRECTOR

Sydney Theatre Company's very significant contribution to enhancing primary literary skills through their School Drama™ Program is an effective and highly valued project. Support for The Social Outfit also has great potential to transform lives and bring hope to individuals and families.



SUE GOUDIE, EXECUTIVE ASSISTANT

It is inspiring to hear the positive influence The Vincent Fairfax Fellowship™ is making in the personal and professional lives of graduates – and to see the Program named as one of Australia's Top 50 Philanthropic Gifts was a highlight.



TIM FAIRFAX AC, CHAIRMAN

Having our founder, Sir Vincent Fairfax inducted into the Queensland Business Leaders Hall of Fame, in particular for having the foresight to establish the Foundation and to now see the next generation playing their part, especially through the Small Grants Committee.



JENNY WHEATLEY, CEO

The May 2014 trip to Bourke with Lee Bromley and Angus White, our early morning walk along the banks of the Darling, being given the opportunity to contribute at the Community meeting and seeing first hand why services are better delivered by those on the ground in communities and not just through cheque books residing in Macquarie Street office drawers.



EMILY FULLER, FOUNDATION MANAGER

Making the first grant in the Children and Prison Program after two years of learning and research, to support the Bourke community pioneer justice reinvestment in Australia. This work advocates the ambitious but imperative change from government investment in incarceration of children, to investment in community-level crime prevention and early intervention.



DAVID HARDIE, PROGRAM OFFICER

A period of extensive research and sector consultation informed the establishment of our new Agriculture theme and it was very satisfying to see this strategic work translate into a significant inaugural grant to Landcare NSW. I think it's great that VFFF believed in this organisation and backed it with core capacity building funding over 18 months with the goal of setting it up for longer term success.



REBECCA NINNESS, GRANTS TRAINEE

Visiting Condobolin for VFFF's Special Policy Meeting was a memorable and inspiring experience. Stepping out of the office and meeting the community members working to support this resilient town really brought our work in the Lachlan Shire to life.



JAMES MILLAR AM, DIRECTOR, AFIC CHAIR

My philosophy is be the best you can be by everyday improving what you do. I think the VFFF is endeavouring to do that and I am proud to be a little part of that.



SALLY WHITE OAM, DIRECTOR

Providing opportunities for young people in remote and regional areas is a goal of the Foundation, so a highlight this year was our support for a number of projects in Bourke. For example Eternity Aid, that works closely with the community to encourage young people onto positive pathways and prevent their involvement with the justice system.



Landholders from the Liverpool Plains of NSW learning about monitoring their groundcover for sustainable grazing management (photo credit Landcare NSW)

VINCENT FAIRFAX FAMILY FOUNDATION

GPO Box 1551, Sydney NSW 2001

Level 7, 99 Macquarie Street

T: (02) 9291 2727

F: (02) 9251 7285

E: foundation@vfff.org.au

www.vfff.org.au